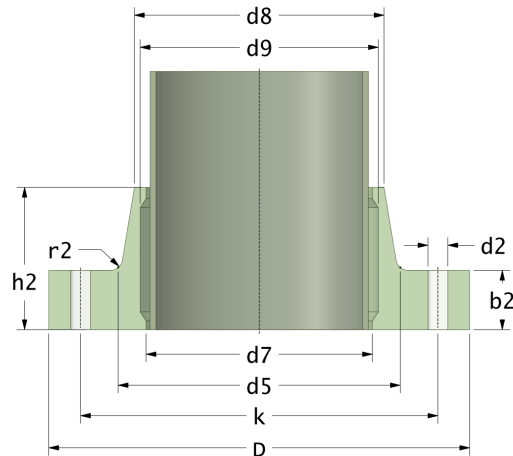


Rotec Vaste Flenzen (Platte Vlakte)

Drilling Standard: JIS B2220 16K



#	DN (mm)	Pmax (bar)	D (mm)	d7 (mm)	d9 (mm)	d8 (mm)	d5 (mm)	r2 (mm)	k (mm)	Holes (no.)	d2 (mm)	h2 (mm)	b2 (mm)	Article Number
1	150	10	305	167	171	178	186	9	260	12	25	73	23	FF-150-10/16K
2	150	16	305	167	171	178	186	9	260	12	25	80	30	FF-150-16/16K
3	150	20	305	167	171	178	186	9	260	12	25	87	37	FF-150-20/16K
4	200	10	350	221	225	230	240	6	305	12	25	81	26	FF-200-10/16K
5	200	16	350	221	225	230	240	6	305	12	25	91	36	FF-200-16/16K
6	200	20	380	221	225	230	246	11	305	12	25	108	46	FF-200-20/16K
7	250	10	430	273	277	288	298	9	380	12	27	89	29	FF-250-10/16K
8	250	16	430	273	277	288	298	9	380	12	27	102	42	FF-250-16/16K
9	250	20	430	273	277	288	298	9	380	12	27	115	55	FF-250-20/16K
10	300	10	490	326	330	338	354	9	430	16	27	97	32	FF-300-10/16K
11	300	16	490	326	330	338	354	9	430	16	27	113	48	FF-300-16/16K
12	300	20	490	326	330	338	354	9	430	16	27	129	64	FF-300-20/16K
13	350	10	540	378	382	390	402	8	480	16	33	105	35	FF-350-10/16K
14	350	16	540	378	382	390	402	8	480	16	33	124	54	FF-350-16/16K
15	350	20	540	378	382	390	402	8	480	16	33	143	73	FF-350-20/16K
16	400	10	600	429	433	441	455	8	540	16	33	113	38	FF-400-10/16K

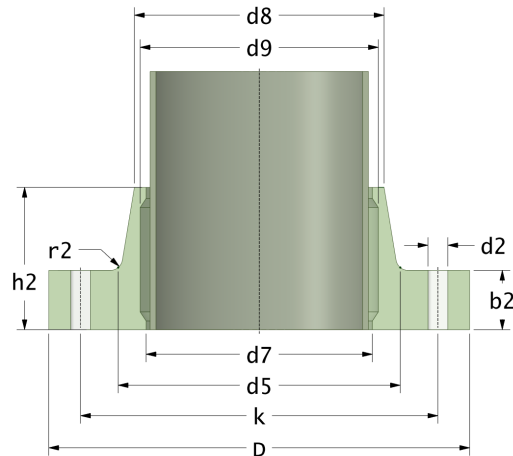
Disclaimer

Whilst every care is taken to ensure that the information on this website is complete and accurate, the Rotec Composite Group BV cannot accept responsibility for any omissions or inaccuracies or for any consequences arising therefrom. By using this website, the user accepts the terms of this disclaimer.

17-11-2022

Rotec Vaste Flenzen (Platte Vlakte)

Drilling Standard: JIS B2220 16K



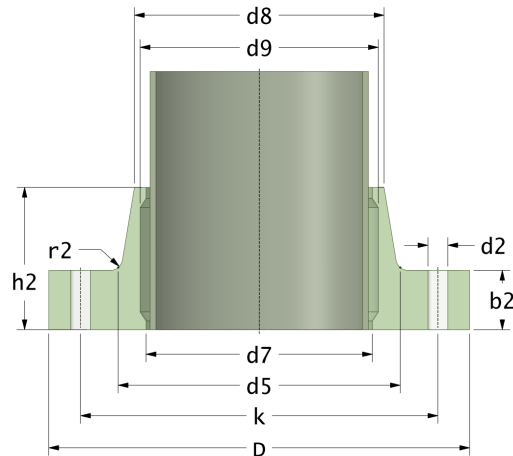
#	DN (mm)	Pmax (bar)	D (mm)	d7 (mm)	d9 (mm)	d8 (mm)	d5 (mm)	r2 (mm)	k (mm)	Holes (no.)	d2 (mm)	h2 (mm)	b2 (mm)	Article Number
17	400	16	600	429	433	441	455	8	540	16	33	135	60	FF-400-16/16K
18	400	20	600	429	433	441	455	8	540	16	33	157	82	FF-400-20/16K
19	450	10	710	480	484	495	520	12	605	20	33	151	41	FF-450-10/16K
20	450	16	710	480	484	495	520	12	605	20	33	176	66	FF-450-16/16K
21	450	20	710	480	484	495	520	12	605	20	33	201	91	FF-450-20/16K
22	500	10	735	532	536	547	570	12	660	20	33	139	44	FF-500-10/16K
23	500	16	735	532	536	547	570	12	660	20	33	167	72	FF-500-16/16K
24	630	10	844	631	635	644	666	12	770	24	39	145	50	FF-630-10/16K
25	630	16	844	631	635	644	666	12	770	24	39	179	84	FF-630-16/16K
26	630	20	850	631	635	644	670	14	770	24	39	228	118	FF-630-20/16K
27	700	10	960	720	724	733	765	18	875	24	42	181	56	FF-700-10/16K
28	700	16	960	720	724	733	765	18	875	24	42	221	96	FF-700-16/16K
29	700	20	960	720	724	733	765	18	875	24	42	261	136	FF-700-20/16K
30	800	10	1085	822	826	835	858	18	990	24	48	177	62	FF-800-10/16K
31	800	16	1085	822	826	835	858	18	990	24	48	223	108	FF-800-16/16K
32	800	20	1085	822	826	835	868	18	990	24	48	299	154	FF-800-20/16K
33	900	10	1190	924	928	939	964	18	1090	28	48	193	68	FF-900-10/16K

Disclaimer

Whilst every care is taken to ensure that the information on this website is complete and accurate, the Rotec Composite Group BV cannot accept responsibility for any omissions or inaccuracies or for any consequences arising therefrom. By using this website, the user accepts the terms of this disclaimer.

Rotec Vaste Flenzen (Platte Vlakte)

Drilling Standard: JIS B2220 16K



#	DN (mm)	Pmax (bar)	D (mm)	d7 (mm)	d9 (mm)	d8 (mm)	d5 (mm)	r2 (mm)	k (mm)	Holes (no.)	d2 (mm)	h2 (mm)	b2 (mm)	Article Number
34	900	16	1190	924	928	939	964	18	1090	28	48	245	120	FF-900-16/16K
35	1000	10	1320	1026	1030	1044	1075	18	1210	28	56	214	74	FF-1000-10/16K
36	1000	16	1320	1026	1030	1044	1075	18	1210	28	56	272	132	FF-1000-16/16K
37	1100	10	1430	1102	1106	1118	1140	25	1310	32	56	190	80	FF-1101-10/16K
38	1100	10	1430	1128	1132	1146	1170	18	1310	32	56	190	80	FF-1102-10/16K
39	1100	16	1430	1102	1106	1118	1160	25	1310	32	56	304	144	FF-1101-16/16K
40	1100	16	1430	1128	1132	1146	1170	18	1310	32	56	314	144	FF-1102-16/16K
41	1200	10	1530	1231	1235	1250	1280	14	1420	32	56	261	86	FF-1200-10/16K
42	1200	16	1530	1231	1235	1250	1280	14	1420	32	56	331	156	FF-1200-16/16K

Disclaimer

Whilst every care is taken to ensure that the information on this website is complete and accurate, the Rotec Composite Group BV cannot accept responsibility for any omissions or inaccuracies or for any consequences arising therefrom. By using this website, the user accepts the terms of this disclaimer.

17-11-2022