

Rotec Vaste Flenzen (Platte Vlakte)

Drilling Standard: ANSI B16.47 Class 150



#	DN (mm)	Pmax (bar)	D (mm)	d7 (mm)	d9 (mm)	d8 (mm)	d5 (mm)	r2 (mm)	k (mm)	Holes (no.)	d2 (mm)	h2 (mm)	b2 (mm)	Article Number
1	700	3	930	720	724	733	758	11	864	28	35	142	37	FF-700-03/150
2	700	10	930	720	724	733	758	11	864	28	35	161	56	FF-700-10/150
3	700	16	930	720	724	733	758	11	864	28	35	201	96	FF-700-16/150
4	750	3	985	771	775	790	810	14	914	28	35	149	39	FF-750-03/150
5	800	3	1085	822	826	835	858	18	978	28	41	155	40	FF-800-03/150
6	800	10	1085	822	826	835	858	18	978	28	41	177	62	FF-800-10/150
7	800	16	1085	822	826	835	858	18	978	28	41	223	108	FF-800-16/150
8	900	3	1190	924	928	939	964	18	1086	32	41	168	43	FF-900-03/150
9	900	6	1190	924	928	939	964	18	1086	32	41	181	56	FF-900-06/150
10	900	10	1190	924	928	939	964	18	1086	32	41	193	68	FF-900-10/150
11	900	16	1190	924	928	939	964	18	1086	32	41	245	120	FF-900-16/150
12	1000	3	1320	1026	1030	1044	1075	18	1200	36	41	186	46	FF-1000-03/150
13	1000	6	1320	1026	1030	1044	1075	18	1200	36	41	200	60	FF-1000-06/150
14	1000	10	1320	1026	1030	1044	1075	18	1200	36	41	214	74	FF-1000-10/150
15	1000	16	1320	1026	1030	1044	1075	18	1200	36	41	272	132	FF-1000-16/150
16	1100	3	1430	1102	1106	1118	1140	25	1314	40	41	159	49	FF-1101-03/150

Disclaimer

Whilst every care is taken to ensure that the information on this website is complete and accurate, the Rotec Composite Group BV cannot accept responsibility for any omissions or inaccuracies or for any consequences arising therefrom. By using this website, the user accepts the terms of this disclaimer.

17-11-2022

Rotec Vaste Flenzen (Platte Vlakte)

Drilling Standard: ANSI B16.47 Class 150



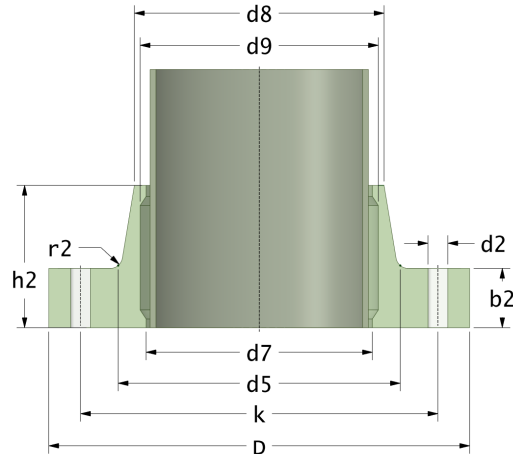
#	DN (mm)	Pmax (bar)	D (mm)	d7 (mm)	d9 (mm)	d8 (mm)	d5 (mm)	r2 (mm)	k (mm)	Holes (no.)	d2 (mm)	h2 (mm)	b2 (mm)	Article Number
17	1100	3	1430	1128	1132	1146	1170	18	1314	40	41	159	49	FF-1102-03/150
18	1100	6	1430	1102	1106	1118	1140	25	1314	40	41	175	65	FF-1101-06/150
19	1100	6	1430	1128	1132	1146	1170	18	1314	40	41	175	65	FF-1102-06/150
20	1100	10	1430	1102	1106	1118	1140	25	1314	40	41	190	80	FF-1101-10/150
21	1100	10	1430	1128	1132	1146	1170	18	1314	40	41	190	80	FF-1102-10/150
22	1100	16	1430	1102	1106	1118	1160	25	1314	40	41	304	144	FF-1101-16/150
23	1100	16	1430	1128	1132	1146	1170	18	1314	40	41	314	144	FF-1102-16/150
24	1200	3	1520	1231	1235	1250	1280	14	1422	44	41	172	52	FF-1200-03/150
25	1200	6	1520	1231	1235	1250	1280	14	1422	44	41	189	69	FF-1200-06/150
26	1200	10	1520	1231	1235	1250	1280	14	1422	44	41	206	86	FF-1200-10/150
27	1200	16	1520	1231	1235	1250	1280	14	1422	44	41	331	156	FF-1200-16/150
28	1300	3	1640	1333	1337	1352	1390	14	1537	44	48	245	55	FF-1300-03/150
29	1300	6	1640	1333	1337	1352	1390	14	1537	44	48	264	74	FF-1300-06/150
30	1300	10	1640	1333	1337	1352	1390	14	1537	44	48	282	92	FF-1300-10/150
31	1300	16	1640	1333	1337	1352	1390	14	1537	44	48	358	168	FF-1300-16/150
32	1400	3	1760	1435	1439	1455	1490	18	1651	48	48	208	58	FF-1400-03/150
33	1400	6	1760	1435	1439	1455	1490	18	1651	48	48	228	78	FF-1400-06/150

Disclaimer

Whilst every care is taken to ensure that the information on this website is complete and accurate, the Rotec Composite Group BV cannot accept responsibility for any omissions or inaccuracies or for any consequences arising therefrom. By using this website, the user accepts the terms of this disclaimer.

Rotec Vaste Flenzen (Platte Vlakte)

Drilling Standard: ANSI B16.47 Class 150



#	DN (mm)	Pmax (bar)	D (mm)	d7 (mm)	d9 (mm)	d8 (mm)	d5 (mm)	r2 (mm)	k (mm)	Holes (no.)	d2 (mm)	h2 (mm)	b2 (mm)	Article Number
34	1400	10	1760	1435	1439	1455	1490	18	1651	48	48	248	98	FF-1400-10/150
35	1400	16	1760	1435	1439	1455	1490	18	1651	48	48	390	180	FF-1400-16/150
36	1500	3	1870	1537	1541	1558	1590	25	1759	52	48	221	61	FF-1500-03/150
37	1500	6	1870	1537	1541	1558	1590	25	1759	52	48	243	83	FF-1500-06/150
38	1500	10	1870	1537	1541	1558	1590	25	1759	52	48	264	104	FF-1500-10/150
39	1500	16	1870	1537	1541	1558	1590	25	1759	52	48	412	192	FF-1500-16/150

Disclaimer

Whilst every care is taken to ensure that the information on this website is complete and accurate, the Rotec Composite Group BV cannot accept responsibility for any omissions or inaccuracies or for any consequences arising therefrom. By using this website, the user accepts the terms of this disclaimer.

17-11-2022