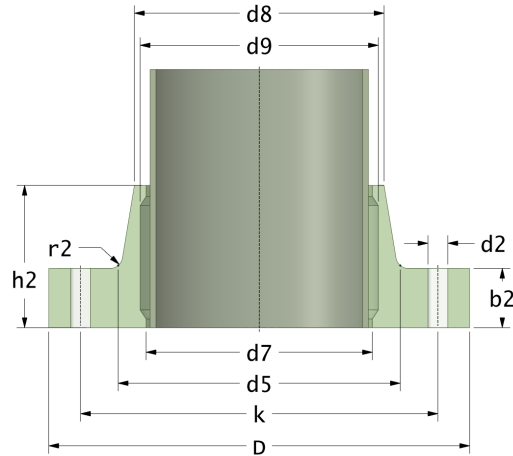


## Brides fixes

### Face plate RTM pour tuyau PRV

Drilling Standard: EN1092 PN40



#	DN (mm)	Pmax (bar)	D (mm)	d7 (mm)	d9 (mm)	d8 (mm)	d5 (mm)	r2 (mm)	k (mm)	Holes (no.)	d2 (mm)	h2 (mm)	b2 (mm)	Article Number
1	150	32	305	167	171	178	186	9	250	8	26	101	51	FF-150-32/40
2	200	32	380	221	225	230	246	11	320	12	30	128	66	FF-200-32/40
3	250	32	450	273	277	288	298	12	385	12	33	141	81	FF-250-32/40
4	300	32	540	326	330	338	356	16	450	16	33	171	96	FF-300-32/40
5	350	32	585	378	382	390	406	12	510	16	36	201	111	FF-350-32/40
6	400	32	660	429	433	441	464	12	585	16	39	226	126	FF-400-32/40
7	450	32	710	480	484	495	520	12	610	20	39	251	141	FF-450-32/40

#### Disclaimer

Whilst every care is taken to ensure that the information on this website is complete and accurate, the Rotec Composite Group BV cannot accept responsibility for any omissions or inaccuracies or for any consequences arising therefrom. By using this website, the user accepts the terms of this disclaimer.

17-11-2022