

## Rotec Brides fixes

### Face plate RTM pour tuyau PRV

Drilling Standard: JIS B2220 10K



#	DN (mm)	Pmax (bar)	D (mm)	d7 (mm)	d9 (mm)	d8 (mm)	d5 (mm)	r2 (mm)	k (mm)	Holes (no.)	d2 (mm)	h2 (mm)	b2 (mm)	Article Number
1	150	10	285	167	171	178	186	6	240	8	23	70	23	FF-150-10/10K
2	200	10	350	221	225	230	240	6	290	12	23	81	26	FF-200-10/10K
3	250	10	410	273	277	288	294	6	355	12	25	89	29	FF-250-10/10K
4	300	10	460	326	330	338	348	6	400	16	25	97	32	FF-300-10/10K
5	350	10	510	378	382	390	402	8	445	16	25	105	35	FF-350-10/10K
6	400	10	570	429	433	441	455	8	510	16	27	113	38	FF-400-10/10K
7	450	10	644	480	484	495	506	8	565	20	27	121	41	FF-450-10/10K
8	500	3	674	532	536	547	560	8	620	20	27	116	31	FF-500-03/10K
9	500	10	674	532	536	547	560	8	620	20	27	129	44	FF-500-10/10K
10	600	3	795	618	622	637	652	10	730	24	33	129	34	FF-600-03/10K
11	600	10	795	618	622	637	652	10	730	24	33	145	50	FF-600-10/10K
12	700	3	910	720	724	733	758	11	840	24	33	142	37	FF-700-03/10K
13	700	10	910	720	724	733	758	11	840	24	33	161	56	FF-700-10/10K
14	800	3	1025	822	826	835	854	14	950	28	33	157	40	FF-800-03/10K
15	800	10	1025	822	826	835	854	14	950	28	33	179	62	FF-800-10/10K
16	900	3	1125	924	928	939	958	14	1050	28	33	168	43	FF-900-03/10K

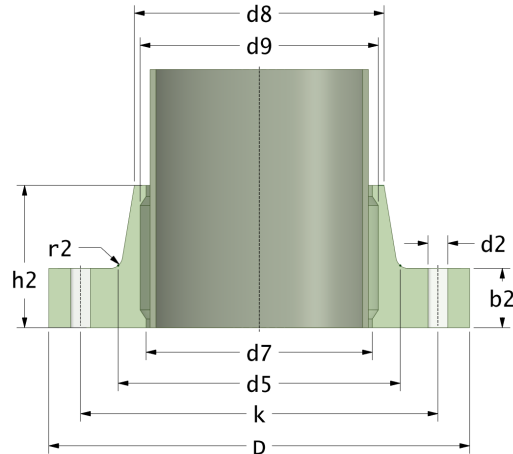
**Disclaimer**

Whilst every care is taken to ensure that the information on this website is complete and accurate, the Rotec Composite Group BV cannot accept responsibility for any omissions or inaccuracies or for any consequences arising therefrom. By using this website, the user accepts the terms of this disclaimer.

## Rotec Brides fixes

### Face plate RTM pour tuyau PRV

Drilling Standard: JIS B2220 10K



#	DN (mm)	Pmax (bar)	D (mm)	d7 (mm)	d9 (mm)	d8 (mm)	d5 (mm)	r2 (mm)	k (mm)	Holes (no.)	d2 (mm)	h2 (mm)	b2 (mm)	Article Number
17	900	6	1125	924	928	939	958	14	1050	28	33	181	56	FF-900-06/10K
18	900	10	1125	924	928	939	958	14	1050	28	33	193	68	FF-900-10/10K
19	1000	3	1234	1026	1030	1044	1065	14	1160	28	39	186	46	FF-1000-03/10K
20	1000	6	1234	1026	1030	1044	1065	14	1160	28	39	200	60	FF-1000-06/10K
21	1000	10	1234	1026	1030	1044	1065	14	1160	28	39	214	74	FF-1000-10/10K
22	1100	3	1355	1102	1106	1118	1140	14	1270	28	39	159	49	FF-1101-03/10K
23	1100	3	1355	1128	1132	1146	1165	14	1270	28	39	159	49	FF-1102-03/10K
24	1100	6	1355	1102	1106	1118	1140	14	1270	28	39	175	65	FF-1101-06/10K
25	1100	6	1355	1128	1132	1146	1165	14	1270	28	39	175	65	FF-1102-06/10K
26	1100	10	1355	1102	1106	1118	1140	14	1270	28	39	190	80	FF-1101-10/10K
27	1100	10	1355	1128	1132	1146	1165	14	1270	28	39	190	80	FF-1102-10/10K
28	1200	3	1470	1231	1235	1250	1280	14	1380	32	39	172	52	FF-1200-03/10K
29	1200	6	1470	1231	1235	1250	1280	14	1380	32	39	189	69	FF-1200-06/10K
30	1200	10	1470	1231	1235	1250	1280	14	1380	32	39	206	86	FF-1200-10/10K
31	1350	3	1640	1384	1388	1402	1425	14	1540	36	45	197	57	FF-1350-03/10K
32	1350	6	1640	1384	1388	1402	1425	14	1540	36	45	216	76	FF-1350-06/10K
33	1350	10	1640	1384	1388	1402	1425	14	1540	36	45	235	95	FF-1350-10/10K

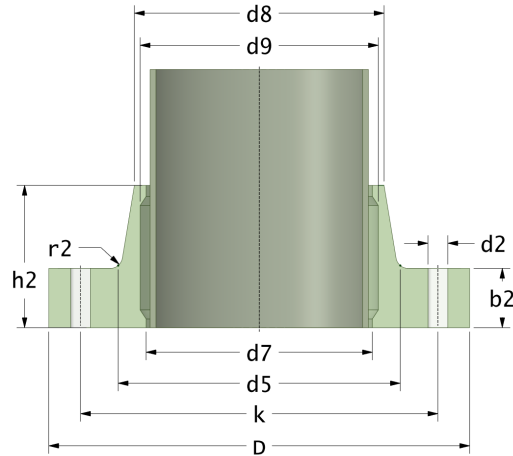
**Disclaimer**

Whilst every care is taken to ensure that the information on this website is complete and accurate, the Rotec Composite Group BV cannot accept responsibility for any omissions or inaccuracies or for any consequences arising therefrom. By using this website, the user accepts the terms of this disclaimer.

## Rotec Brides fixes

### Face plate RTM pour tuyau PRV

Drilling Standard: JIS B2220 10K



#	DN (mm)	Pmax (bar)	D (mm)	d7 (mm)	d9 (mm)	d8 (mm)	d5 (mm)	r2 (mm)	k (mm)	Holes (no.)	d2 (mm)	h2 (mm)	b2 (mm)	Article Number
34	1500	3	1810	1537	1541	1558	1580	14	1700	40	45	221	61	FF-1500-03/10K
35	1500	6	1810	1537	1541	1558	1580	14	1700	40	45	243	83	FF-1500-06/10K
36	1500	10	1810	1537	1541	1558	1580	14	1700	40	45	264	104	FF-1500-10/10K

#### Disclaimer

Whilst every care is taken to ensure that the information on this website is complete and accurate, the Rotec Composite Group BV cannot accept responsibility for any omissions or inaccuracies or for any consequences arising therefrom. By using this website, the user accepts the terms of this disclaimer.

17-11-2022