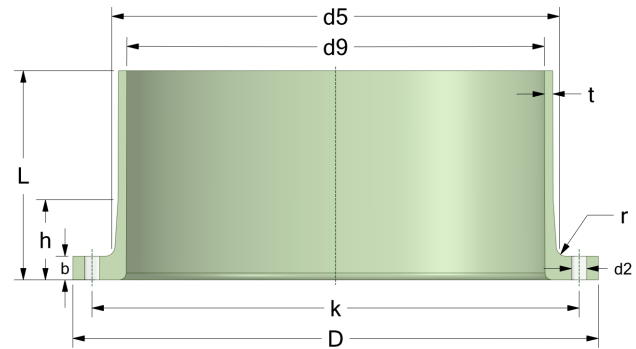
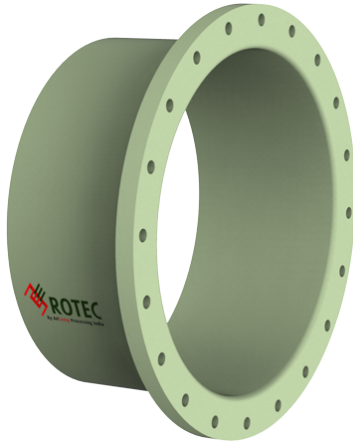


# Rotec Pozos de acceso

## Registro

Resin Type: Derakane 411



#	DN (mm)	Pmax (bar)	D (mm)	d9 (mm)	t (mm)	d5 (mm)	r (mm)	k (mm)	Holes (no.)	d2 (mm)	L (mm)	h (mm)	b (mm)	Article Number
1	500	1	640	502	6.0	526	14	586	20	18	200	90	20	MHS-500-01/RS
2	500	3	640	502	6.0	534	14	586	20	22	200	115	34	MHS-500-03/RS
3	600	1	755	602	7.5	628	14	700	20	18	300	90	20	MHS-600-01/RS
4	600	3	755	602	12.0	636	14	700	20	22	300	115	34	MHS-600-03/RS
5	800	1	975	803	9.0	847	16	920	24	18	360	140	30	MHS-800-01/RS
6	800	3	975	803	14.0	855	16	920	24	26	360	165	44	MHS-800-03/RS

### Disclaimer

Whilst every care is taken to ensure that the information on this website is complete and accurate, the Rotec Composite Group BV cannot accept responsibility for any omissions or inaccuracies or for any consequences arising therefrom. By using this website, the user accepts the terms of this disclaimer.

16-10-2023