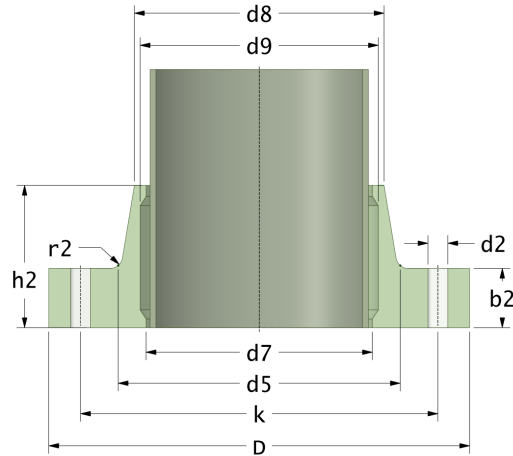


Rotec Bridas fijas

Cara plana RTM para tubería GRP

Drilling Standard: ANSI B16.47 Class 300



#	DN (mm)	Pmax (bar)	D (mm)	d7 (mm)	d9 (mm)	d8 (mm)	d5 (mm)	r2 (mm)	k (mm)	Holes (no.)	d2 (mm)	h2 (mm)	b2 (mm)	Article Number
1	700	16	1035	720	724	733	765	18	940	28	44	221	96	FF-700-16/300
2	700	20	1035	720	724	733	765	18	940	28	44	261	136	FF-700-20/300
3	700	25	1035	720	724	733	765	18	940	28	44	301	176	FF-700-25/300
4	800	16	1150	822	826	835	868	18	1054	28	51	253	108	FF-800-16/300
5	800	20	1150	822	826	835	868	18	1054	28	51	299	154	FF-800-20/300
6	800	25	1150	822	826	835	868	18	1054	28	51	345	200	FF-800-25/300
7	900	16	1270	924	928	939	975	22	1168	32	54	280	120	FF-900-16/300
8	900	20	1270	924	928	939	975	22	1168	32	54	332	172	FF-900-20/300
9	900	25	1270	924	928	939	975	22	1168	32	54	384	224	FF-900-25/300

Disclaimer

Whilst every care is taken to ensure that the information on this website is complete and accurate, the Rotec Composite Group BV cannot accept responsibility for any omissions or inaccuracies or for any consequences arising therefrom. By using this website, the user accepts the terms of this disclaimer.

17-11-2022