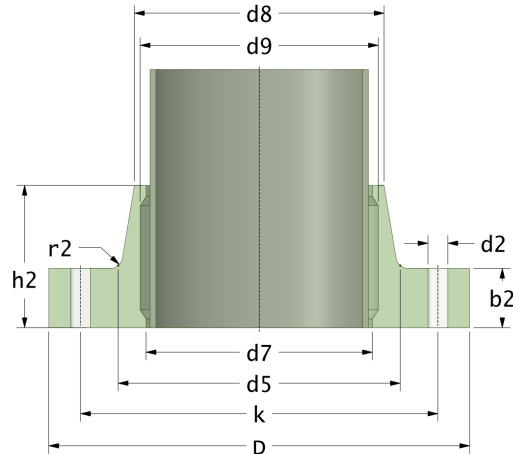


Rotec Fest Flansche

Flat Face RTM für GFK-Rohr

Drilling Standard: AS 2129 Table F



#	DN (mm)	Pmax (bar)	D (mm)	d7 (mm)	d9 (mm)	d8 (mm)	d5 (mm)	r2 (mm)	k (mm)	Holes (no.)	d2 (mm)	h2 (mm)	b2 (mm)	Article Number
1	150	20	305	167	171	178	186	9	260	12	22	87	37	FF-150-20/AS-F
2	150	25	305	167	171	178	186	9	260	12	22	94	44	FF-150-25/AS-F
3	150	32	305	167	171	178	186	9	260	12	22	101	51	FF-150-32/AS-F
4	200	20	380	221	225	230	246	11	324	12	22	108	46	FF-200-20/AS-F
5	200	25	380	221	225	230	246	11	324	12	22	118	56	FF-200-25/AS-F
6	200	32	380	221	225	230	246	11	324	12	22	128	66	FF-200-32/AS-F
7	250	20	430	273	277	288	298	9	381	12	26	115	55	FF-250-20/AS-F
8	250	25	430	273	277	288	298	9	381	12	26	128	68	FF-250-25/AS-F
9	250	32	430	273	277	288	298	9	381	12	26	141	81	FF-250-32/AS-F
10	300	20	490	326	330	338	354	9	438	16	26	129	64	FF-300-20/AS-F
11	300	25	490	326	330	338	354	9	438	16	26	145	80	FF-300-25/AS-F
12	300	32	540	326	330	338	356	16	438	16	26	171	96	FF-300-32/AS-F
13	350	20	585	378	382	390	406	12	495	16	30	163	73	FF-350-20/AS-F
14	350	25	585	378	382	390	406	12	495	16	30	182	92	FF-350-25/AS-F
15	350	32	585	378	382	390	406	12	495	16	30	201	111	FF-350-32/AS-F
16	400	20	640	429	433	441	464	12	552	20	30	182	82	FF-400-20/AS-F
17	400	25	640	429	433	441	464	12	552	20	30	204	104	FF-400-25/AS-F
18	400	32	640	429	433	441	464	12	552	20	30	226	126	FF-400-32/AS-F

Disclaimer

Whilst every care is taken to ensure that the information on this website is complete and accurate, the Rotec Composite Group BV cannot accept responsibility for any omissions or inaccuracies or for any consequences arising therefrom. By using this website, the user accepts the terms of this disclaimer.

Rotec Fest Flansche

Flat Face RTM für GFK-Rohr

Drilling Standard: AS 2129 Table F



#	DN (mm)	Pmax (bar)	D (mm)	d7 (mm)	d9 (mm)	d8 (mm)	d5 (mm)	r2 (mm)	k (mm)	Holes (no.)	d2 (mm)	h2 (mm)	b2 (mm)	Article Number
19	450	20	710	480	484	495	520	12	610	20	33	201	91	FF-450-20/AS-F
20	450	25	710	480	484	495	520	12	610	20	33	226	116	FF-450-25/AS-F
21	450	32	710	480	484	495	520	12	610	20	33	251	141	FF-450-32/AS-F
22	500	20	735	532	536	547	570	12	673	24	33	195	100	FF-500-20/AS-F
23	500	25	735	532	536	547	570	12	673	24	33	223	128	FF-500-25/AS-F
24	630	20	850	631	635	644	670	14	781	24	36	228	118	FF-630-20/AS-F
25	630	25	850	631	635	644	670	14	781	24	36	262	152	FF-630-25/AS-F
26	700	20	960	720	724	733	765	18	857	24	36	261	136	FF-700-20/AS-F
27	700	25	960	720	724	733	765	18	857	24	36	301	176	FF-700-25/AS-F
28	800	20	1085	822	826	835	868	18	984	28	36	299	154	FF-800-20/AS-F
29	800	25	1085	822	826	835	868	18	984	28	36	345	200	FF-800-25/AS-F
30	900	20	1190	924	928	939	964	18	1105	32	39	332	172	FF-900-20/AS-F
31	900	25	1190	924	928	939	964	18	1105	32	39	384	224	FF-900-25/AS-F
32	1000	20	1320	1026	1030	1044	1075	18	1194	36	39	370	190	FF-1000-20/AS-F
33	1000	25	1320	1026	1030	1044	1075	18	1194	36	39	428	248	FF-1000-25/AS-F
34	1200	20	1540	1231	1235	1250	1280	18	1441	40	42	416	226	FF-1200-20/AS-F

Disclaimer

Whilst every care is taken to ensure that the information on this website is complete and accurate, the Rotec Composite Group BV cannot accept responsibility for any omissions or inaccuracies or for any consequences arising therefrom. By using this website, the user accepts the terms of this disclaimer.

17-11-2022